



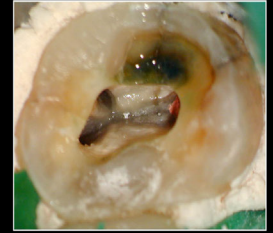
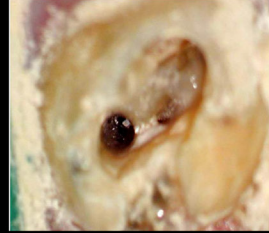
# EVOLUTION ZOOM

DENTAL SURGICAL MICROSCOPE





**"YOU CAN'T TREAT  
WHAT YOU CAN'T SEE!"**



## **EVOLUTION ZOOM TECHNICAL SPECIFICATIONS**

PN: EVO-100Z  
PN: EVO-100XY

- Magnification Changer: ZOOM 1:6 Motorized
- APOCHROMATIC OBJECTIVES f=175mm-400mm
- Widefield Eyepieces 10x, 12.5x, and 20x, Diopter adjustment +6/-6
- LED Illumination + 100,000 LUX, 50,000 hours of life  
OPTIONAL: Xenon Illumination=180,000 LUX
- Motorized 40mm Fine Focus
- Optional XY Unit range 50mm with automatic reset Button
- Control Unit: Multi-functional Display for illumination, focus, zoom, and automatic reset
- Hand/Foot Switch: 14 function foot pedal and 8 function hand control grip

### **ACCESSORIES**

- 50/50 -50/50, 50/50-20/80 Beamsplitter
- Full 1080P HD Live Video
- DSLR Camera (Nikon D3300, Canon Rebel T5 , or Sony A5000), Full 1080P HD Live Video, and GoPro
- Assistant Binocular Head
- Extender/Rotation Device
- Laser Filters
- Iris Diaphragm

